



MONTHLY MEMBERSHIP PROGRESS REPORT

District 1 CS

Results as of: 07/31/2018

GMT: STEVE ANTON

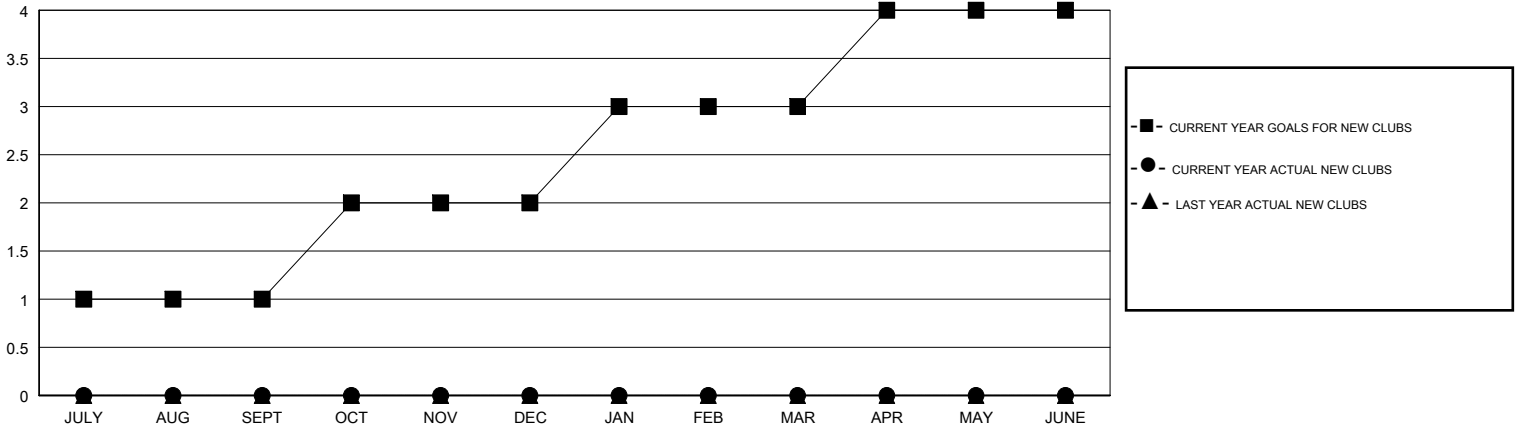
LOCATION ILLINOIS

GMT CA

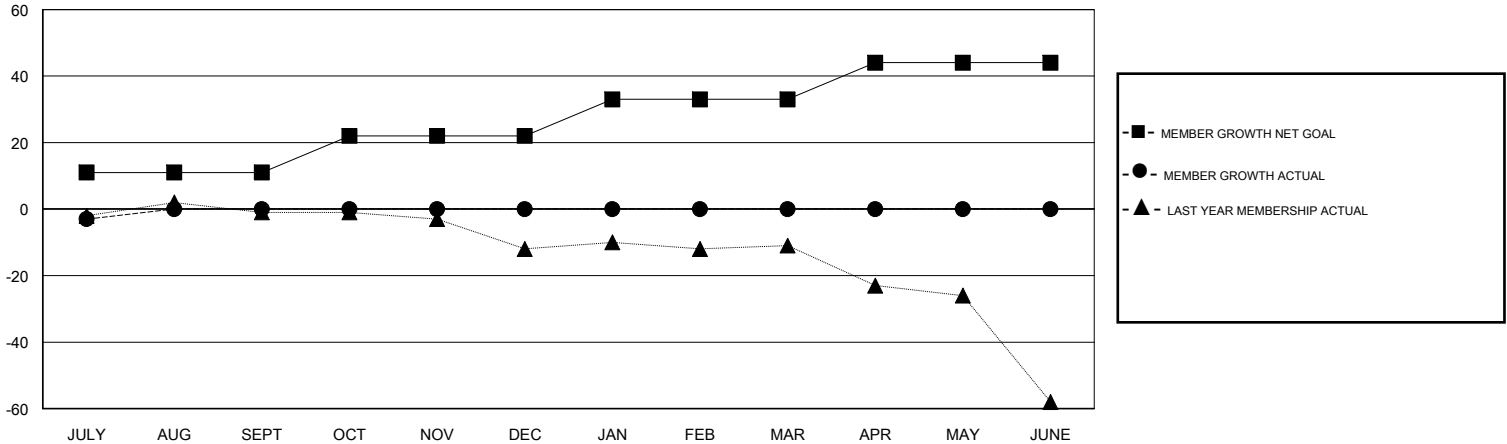
Clubs			
RESULTS FOR 2018-2019			
QUARTER	NEW CLUB GOAL	NEW CLUBS	DROPPED CLUBS
JULY/AUG/SEPT	1	0	0
OCT/NOV/DEC	1	0	0
JAN/FEB/MAR	1	0	0
APR/MAY/JUNE	1	0	0

Members			
RESULTS FOR 2018-2019			
QUARTER	MEMBER GROWTH NET GOAL	MEMBER GROWTH ACTUAL	DROPPED MEMBERS ACTUAL (including transfers)
JULY/AUG/SEPT	11	2	4
OCT/NOV/DEC	11	0	0
JAN/FEB/MAR	11	0	0
APR/MAY/JUNE	11	0	0

GOALS AND ACTUAL NEW CLUBS CUMULATIVE



GOALS AND ACTUAL MEMBERS CUMULATIVE



DROPPED CLUBS: 0	1 CLUBS OF 30 ADDED 1 OR MORE NEW MEMBERS	GENDER DISTRIBUTION MALE 527 (74.96%) FEMALE 176 (25.04%) Women Percentage Fiscal Year Goal: 50%
DROPPED MEMBERS	CLICK HERE FOR CUMULATIVE MEMBERSHIP DATA	TOTAL FAMILY UNIT MEMBERS 87
DECEASED 0		FAMILY MEMBERS PAYING HALF DUES 45
CLUB CANCELLED 0		
OTHER 4		
TOTAL 4		